



# OWNERS MANUAL

OPERATION, PARTS, AND STORAGE





*Thank you for purchasing  
the Montana Post Driver.*

We expect that this post driver will give you years of trouble free service. We offer a one-year warranty.

Your Montana Post Driver comes pre-charged with nitrogen and is ready to hook up and use.

# CONTENTS

<b>Safety Precautions</b> . . . . .	4
<b>Operating Instructions</b> . . . . .	5
<b>Maintenance</b> . . . . .	6
<b>Changing Tool</b> . . . . .	7
<b>Re-Charging</b> . . . . .	8
<b>T-Rex 350E Fork Rail Mount Parts</b> . . . . .	10
<b>T-Rex 350E Center Mount Parts</b> . . . . .	12
<b>T-Rex 350E Side Extension Parts</b> . . . . .	13
<b>400E Parts</b> . . . . .	14
<b>750R Parts</b> . . . . .	16
<b>1000E Parts</b> . . . . .	18
<b>1500E Parts</b> . . . . .	20
<b>Auger Attachment Parts</b> . . . . .	22
<b>Tilt Attachment Parts</b> . . . . .	23
<b>Tooling</b> . . . . .	24
<b>Troubleshooting Guide</b> . . . . .	26
<b>Technical Information</b> . . . . .	27
<b>Storage</b> . . . . .	28
<b>Warranty</b> . . . . .	29

## WARNING

**Serious injury or death could result from improper use and service/repair of this post driver!**

- ⚠ Read and understand this manual and any decals attached to the post driver before operation or service.
- ⚠ We recommend wearing personal protection (hearing protection, gloves, safety glasses, steel-toe footwear and hard hat) while hooking up, operating, or servicing the post driver.
- ⚠ Heavy! When lifting, use extreme caution and ensure your lifting device is sufficient to lift the post driver. Never stand underneath lifted post driver.
- ⚠ Engage quick release and other locking mechanism attaching post driver to equipment before use.
- ⚠ Ensure that all bolts and hydraulic fittings are tightened and pins holding tools are properly in place.
- ⚠ Be aware of all pinch points between the post driver and the machine and stay clear.
- ⚠ Do not operate the post driver if a person on the ground is within 6 feet of the post driver.
- ⚠ After use parts become hot— Do not touch hot parts.
- ⚠ Do not ride on post driver— Riders falling off could be injured or killed.
- ⚠ Always replace worn or broken parts immediately. Do not use the post driver if any parts are not functioning properly.
- ⚠ Always keep safety and informational decals visible. Replace decals that are lost or cannot be read.

## NOTICE!

### Basic Operation

For this post driver to operate, it requires significant down pressure. Place the post driver on top of a post and apply down pressure. (To make sure you have enough down pressure; apply down pressure to the point of lifting the front wheels of your machine off the ground.) Next, run your hydraulic switch. If the hoses bunch up and nothing happens, try running your hydraulic switch the opposite direction. Keep continuous down pressure on the post as it is being driven down. If your machine has the float option, that works very well.

### Dry Fire Protection

The dry fire protection in the post driver requires down pressure from the skidsteer/excavator before it will operate. Always keep down pressure on the post you are driving to prevent dry firing.

### Tool

Montana Post Driver is available with a domed or a flat tool. The domed tool is ideal for capped wood posts and pipe. The flat tool is ideal for blunt wood posts, square wood/metal posts, and I beams.



In order to change the post driving tool, just drive out the 5/8" roll pin, located at the front right bottom part of the hammer power cell all the way through the back. This allows the 1 1/2" retaining pin to slide out. To re-assemble, drive the roll pin through the front. (Step by step instructions are on the next page.)

### Grease

The Montana Post Driver should be greased with 5-6 pumps of grease every 2-3 hours of use. We recommend using chisel paste/hammer paste. (Other grease works as well, but it liquefies faster when it gets hot and requires more.)

### Chain

The Montana Post Driver comes with a chain to use as a plump bob and as well as depth gauge. Use only the center hook for pulling post. The outside hooks are used only for holding the tag end of the chain.

For technical questions, please call Montana Post Driver at 1-800-330-1937  
Or visit us on the web at: [www.MontanaPostDriver.com](http://www.MontanaPostDriver.com)

## Daily Maintenance

### 1. Keep it Greased!

5-6 pumps of grease every 2-3 hours of use. We recommend using chisel paste/hammer paste.

### 2. Daily Visual Inspection

**Fasteners**— Inspect all fasteners. Re-tighten as necessary.

**Welds**— Check for cracks; repair as necessary.

**Hydraulic Hoses**— Check for oil leaks, hose abrasions, and loose fittings. Replace/repair as necessary.

**Tool**— Check the tool for breakage. Replace when cracked or broken.

## NOTICE

When greasing, apply down pressure so that the tool is in all the way. This ensures that the grease penetrates between the tool shaft and the bushing.

## Periodic Maintenance (every 200 hours or 2 times per year)

### 1. Tool

Remove tool.

Check for excessive wear or breakage on tool. Replace as required.

### 2. Bushings and Housing

Check for chips or cracks in the housing and bushings. Replace as required.

### 3. Tool Retaining Pin

Examine tool retaining pin. Replace if worn excessively.

### 4. Parts

Inspect all parts. Replace damaged or worn parts.

### 5. Nitrogen Pressure

Check nitrogen pressure. If pressure is below 200 psi, then add nitrogen. 230 psi is recommended. (See nitrogen re-charging page for instructions).



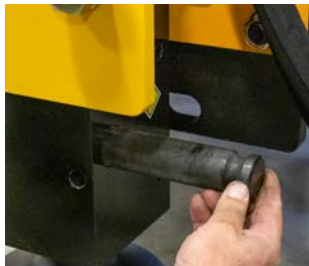
## 1 Drive Out the Roll Pin

Locate the 5/8" dia. roll pin at the bottom right hand corner of the post driver cell. Take the punch from your tool box and drive the roll pin out the back.



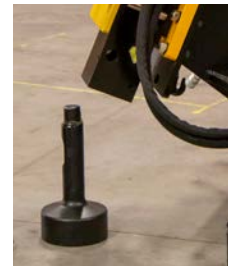
## 2 Pull Out Retaining Pin

Remove the 1-1/4" retaining pin with your thumb or a slight tap of a hammer.



## 3 Remove Tool

Lift the power cell off the tool.



## 4 Insert Tool and Retaining Pin

Slid the retaining pin in part ways. Insert the tool. Install the retaining pin the rest of the way.



## 5 Replace Roll Pin

Set the power cell down onto the tool. Install the roll pin.



# Re-charging



All Models

The post driver comes pre-charged with nitrogen. We recommend that the nitrogen charge is checked annually and maintains a charge of 200-230 PSI or 16 BAR.

## 1 Check the Pressure



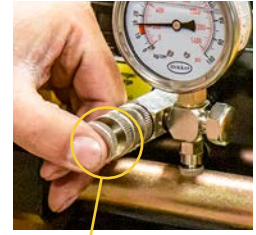
Remove the plug on the charge port.



Thread the gauge in.



Make sure that the bleeder valve is closed.



Push indent knob in to check pressure. (Nitrogen valve on post driver is similar to a tire valve.)

## 2 Add Nitrogen to the Post Driver



Remove cap from gauge.



Connect hose to the gauge



Screw the adapter into the tank



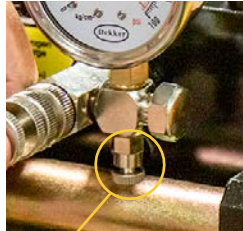
Attach the hose to the adapter



## 3 Charging the Driver



Make sure that the indent knob is pulled all the way out.



Make sure that the bleeder valve is closed.



Open valve on tank SLOWLY and watch the gauge increase. **Be careful not to exceed 230 PSI.** Close valve on the tank as gauge approaches 230 PSI.

## 4 Check the Pressure Again



Press the indent knob to check the pressure.

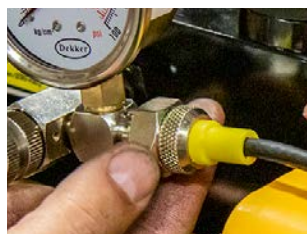


If the pressure is above 230 PSI, press the indent knob and open the bleeder valve to release any excess gas to the desired pressure.

## 5 Disconnect



Make sure that the indent knob is pulled all the way out and open the bleeder valve to release the pressure in the line.



Disconnect the bottle and charging kit from the post driver.



Replace the plug in the charge port and tighten. Check for any leaks with a soap/water solution

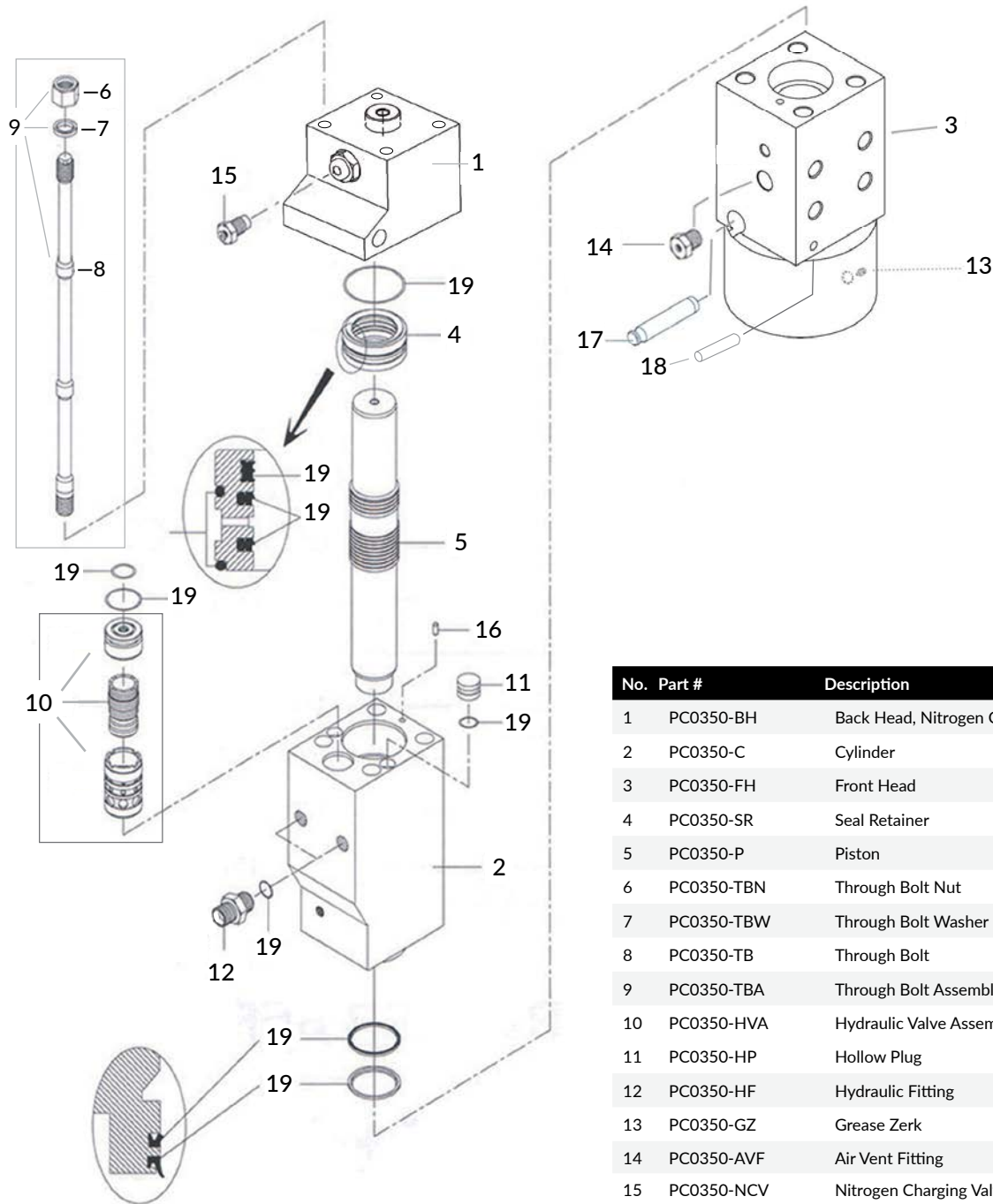
# T-Rex 350E



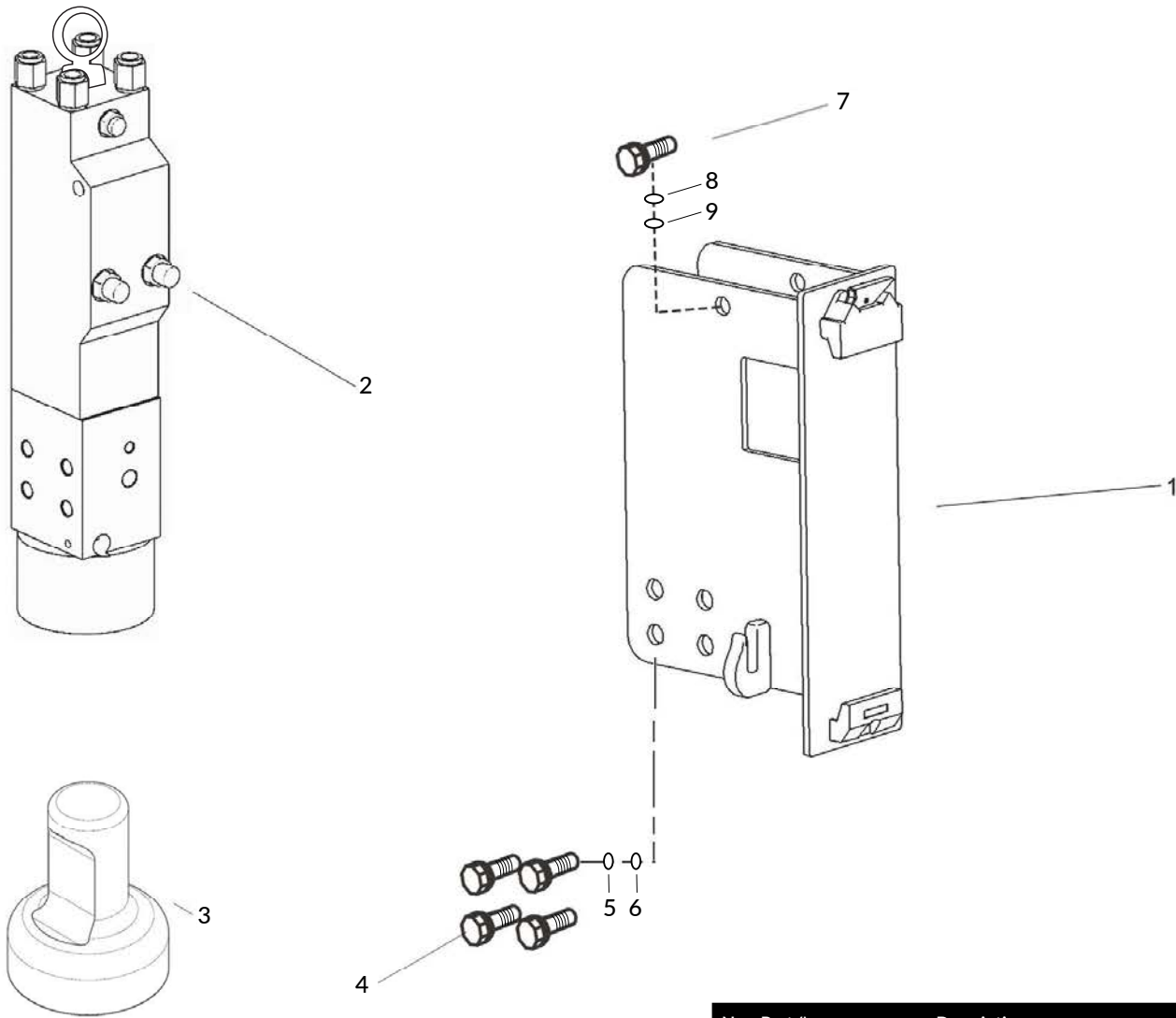
**350E**

## Internal Parts

Diagram 1



No.	Part #	Description	Qty
1	PC0350-BH	Back Head, Nitrogen Cavity	1
2	PC0350-C	Cylinder	1
3	PC0350-FH	Front Head	1
4	PC0350-SR	Seal Retainer	1
5	PC0350-P	Piston	1
6	PC0350-TBN	Through Bolt Nut	4
7	PC0350-TBW	Through Bolt Washer	4
8	PC0350-TB	Through Bolt	4
9	PC0350-TBA	Through Bolt Assembly (#6,7,8)	4
10	PC0350-HVA	Hydraulic Valve Assembly	1
11	PC0350-HP	Hollow Plug	3
12	PC0350-HF	Hydraulic Fitting	2
13	PC0350-GZ	Grease Zerk	1
14	PC0350-AVF	Air Vent Fitting	1
15	PC0350-NCV	Nitrogen Charging Valve	1
16	PC0350-CAP	Cylinder Alignment Pin	1
17	PC0350-TRP	Tool Retaining Pin	1
18	PC0350-RP	Roll Pin	1
19	PC0350-SK	Seal Kit	1



# 10 Hose Kit  
(Illustration Coming)

No.	Part #	Description	Qty
1	PC0350-MF	Mounting Frame, Fork Rail	1
2	PC0350	Power Cell	1
3	PC0350-TSD	Standard Domed Tool	1
4	PC0350-MH01	Hex Head Bolt, M20-2.5x45mm, Grade 10.9, ISO 4017	8
5	PC0350-MH03	Lock Washer, M20-2.5, ISO 7090	8
6	PC0350-MH02	Flat Washer, 21.2mm ID, 33.6mm OD, ISO 7089	8
7	PC0350-MH04	Hex Head Bolt, M18-2.5x40mm, Grade 10.9, ISO 4017	2
8	PC0350-MH06	Lock Washer, M18-2.5, ISO 7090	2
9	PC0350-MH05	Flat Washer, 19mm ID, 29.4mm OD, ISO 7089	2
10	PC0350-HK	Hose Kit (2 Hoses) With Elbows & Quick Couplers	1

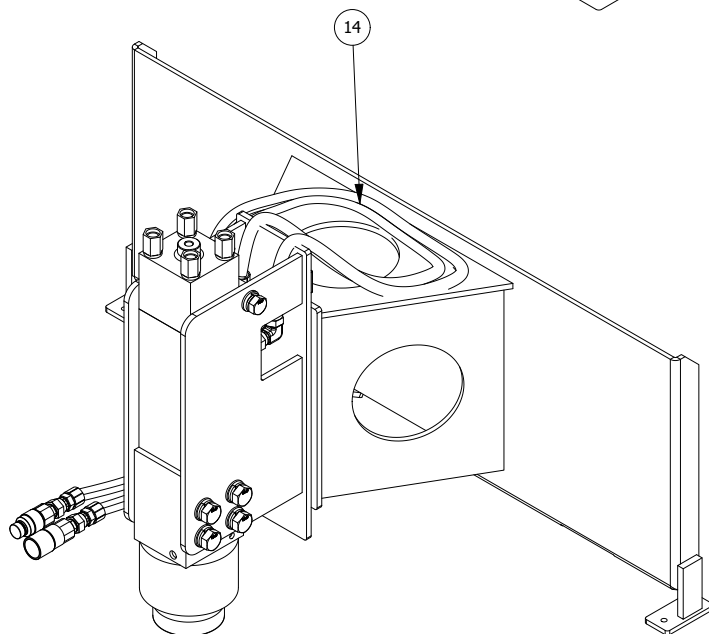
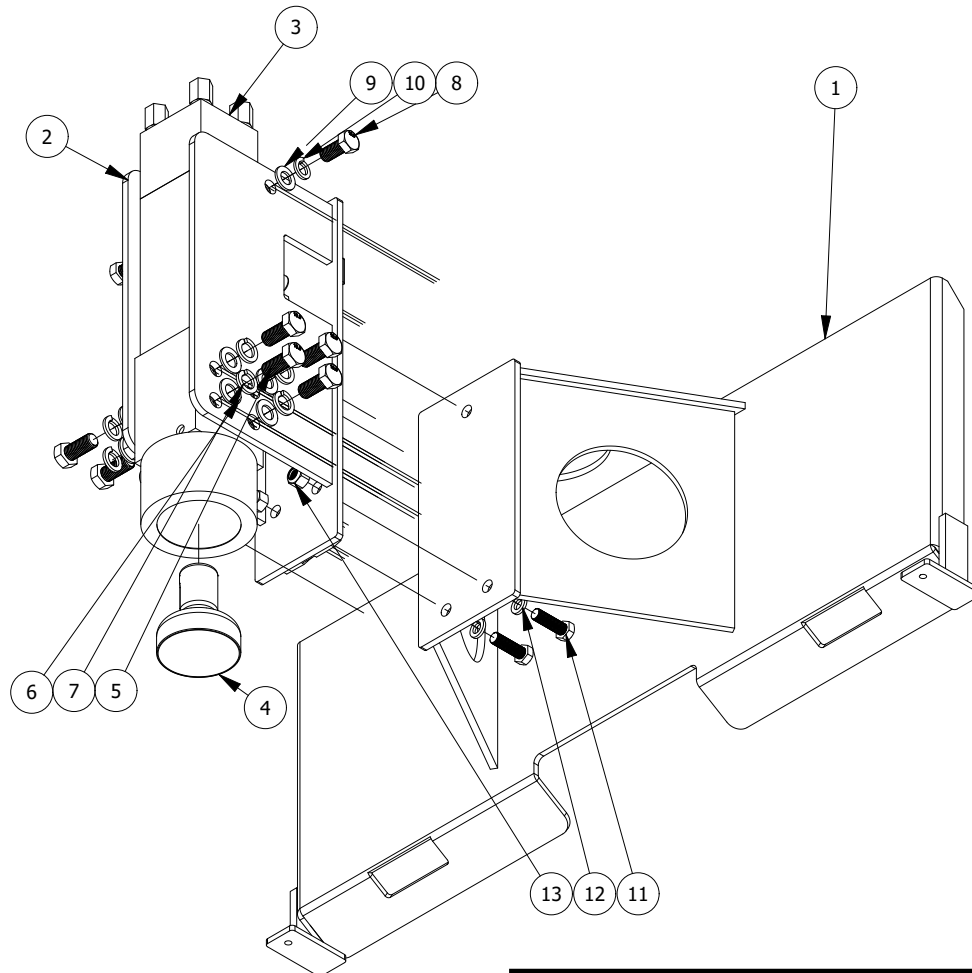
# T-Rex 350E



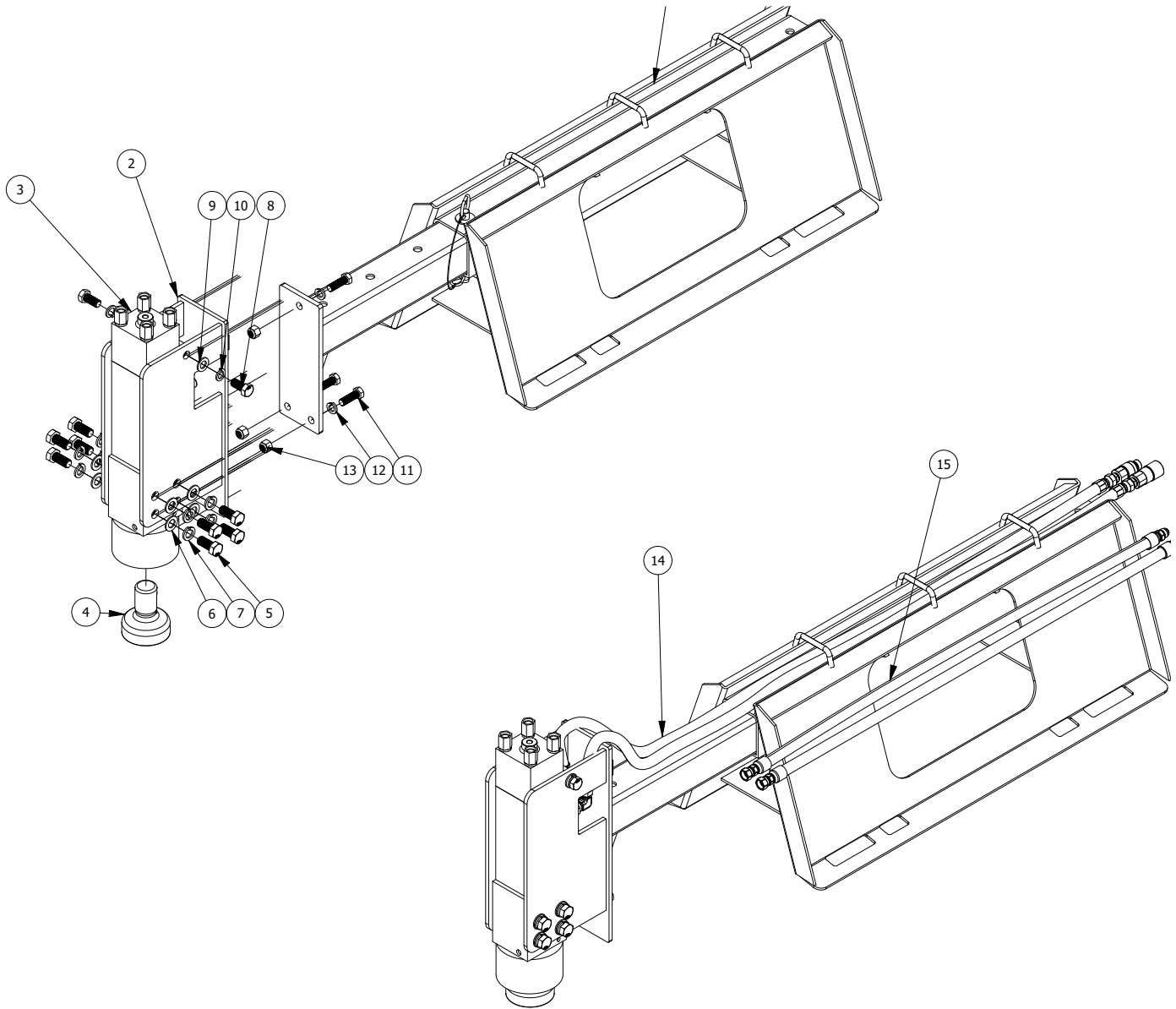
**350E**

## Center Mount

Diagram 3



No.	Part #	Description	Qty
1	FSS-PC0350-CM	Skid Steer Frame, T-REX 350E, Center	1
2	PC0350-MF	Mounting Frame, T-REX 350E	1
3	PC350	Power Cell, T-REX 350E	1
4	PC0350-TSD	Standard Dome Tool, T-REX 350E	1
5	PC0350-MH01	Hex Head Bolt, M20-2.5 x 45 mm, Grade 10.9, ISO 4017	8
6	PC0350-MH02	Flat Washer, 21.2 mm ID, 33.6 mm	8
7	PC0350-MH03	Lock Washer, M20-2.5, ISO 7090	8
8	PC0350-MH04	Hex Head Bolt, M18-2.5 x 40 mm, Grade 10.9, ISO 4017	2
9	PC0350-MH05	Flat Washer, 19 mm ID, 29.4 mm OD, ISO 7089	2
10	PC0350-MH06	Lock Washer, M18-2.5, ISO 7090	2
11	MS90728-164	Hex Head Bolt, 5/8"-11, 2" Length, Grade 8	3
12	MS15795-821	Flat Washer, .82" ID, 1.48 OD"	3
13	MS17830-10C	Locking Nut, 5/8"-11	3
14	PC0350-HK	Hose Kit, T-REX 350E	1



No.	Part #	Description	Qty
1	FSS-PC0350-SE	Skid Steer Frame, T-REX 350E, Side Extension	1
2	PC0350-MF	Mounting Frame, T-REX 350E	1
3	PC0350	Power Cell, T-REX 350E	1
4	PC0350-TSD	Standard Dome Tool, T-REX 350E	1
5	PC0350-MH01	Hex Head Bolt, M20-2.5x45mm, Grade 10.9, ISO 4017	8
6	PC0350-MH02	Flat Washer, 21.2 mm ID, 33.6 mm OD, ISO 7089	8
7	PC0350-MH03	Lock Washer, M20-2.5, ISO 7090	8

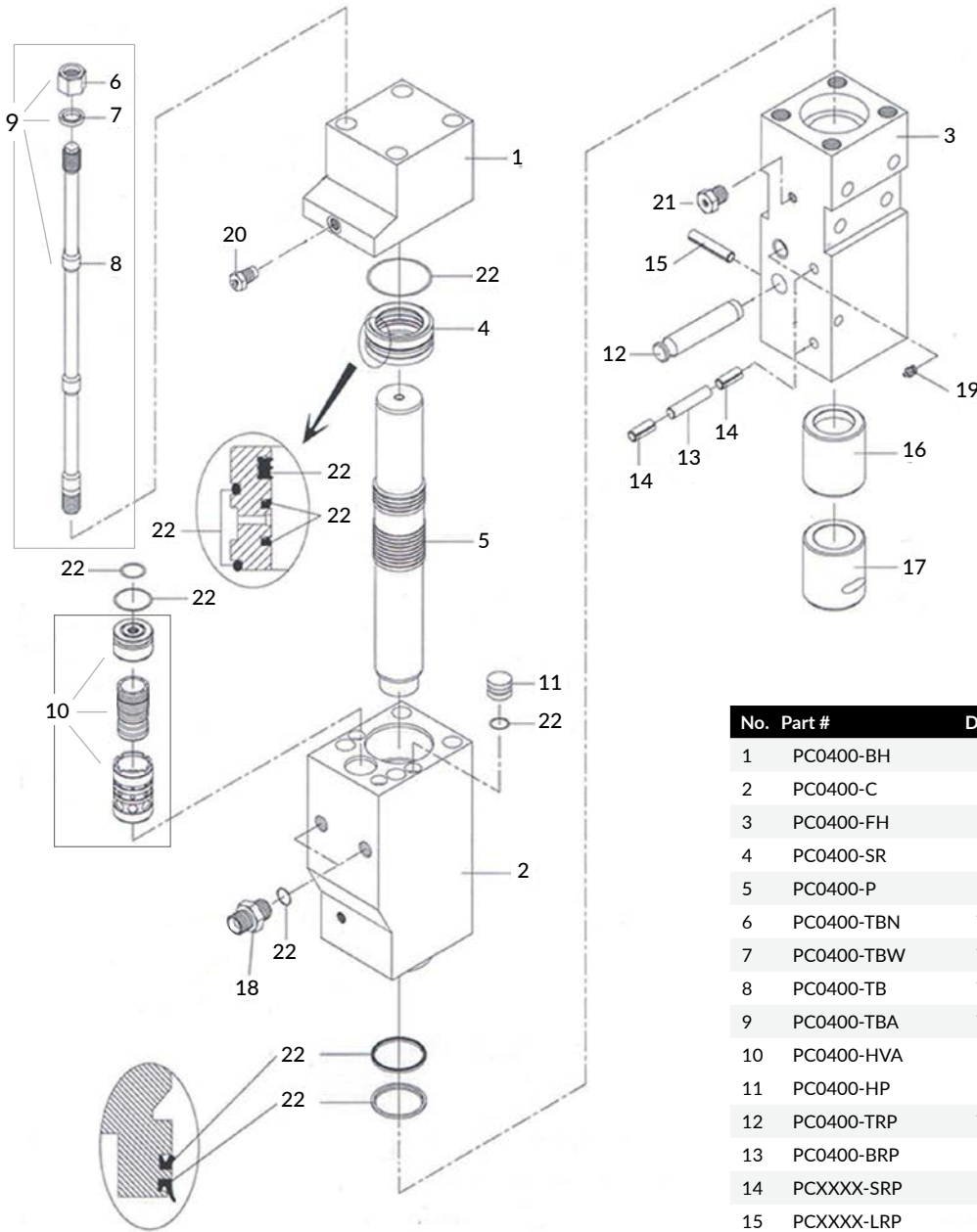
8	PC0350-MH04	Hex Head Bolt, M18-2.5 x 40 mm, Grade 10.9, ISO 4017	2
9	PC0350-MH05	Flat Washer, 19 mm ID, 29.4 mm OD, ISO 7089	2
10	PC0350-MH06	Lock Washer, M18-2.5, ISO 7090	2
11	MS90728-164	Hex Head Bolt, 5/8"-11, 2" Length,	3
12	MS15795-821	Flat Washer, .82" ID, 1.48 OD"	3
13	MS17830-10C	Locking Nut, 5/8"-11	3
14	PC0350-HK	Hose Kit, T-REX 350E	1
15	PC0350-HKEX	Hose Extension Kit, T-REX 350E	1

# 400E

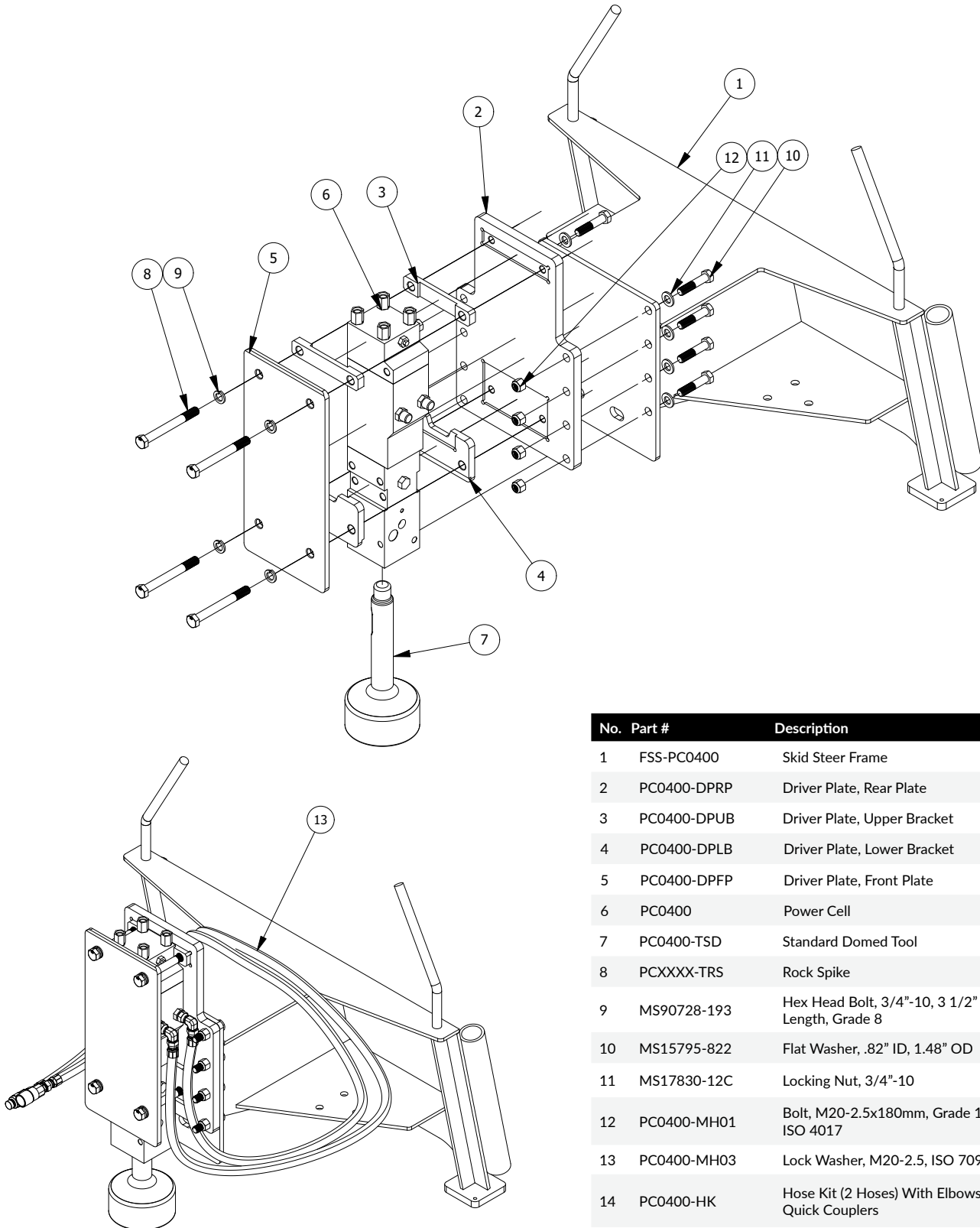
## Internal Parts



Diagram 5



No.	Part #	Description	Qty
1	PC0400-BH	Back Head, Nitrogen Cavity	1
2	PC0400-C	Cylinder	1
3	PC0400-FH	Front Head	1
4	PC0400-SR	Seal Retainer	1
5	PC0400-P	Piston	1
6	PC0400-TBN	Through Bolt Nut	4
7	PC0400-TBW	Through Bolt Washer	4
8	PC0400-TB	Through Bolt	4
9	PC0400-TBA	Through Bolt Assembly (#6,7,8)	4
10	PC0400-HVA	Hydraulic Valve Assembly	1
11	PC0400-HP	Hollow Plug	3
12	PC0400-TRP	Tool Retaining Pin	1
13	PC0400-BRP	Bushing Retaining Pin	2
14	PCXXXX-SRP	Short Roll Pin 2"	4
15	PCXXXX-LRP	Long Roll Pin 4"	1
16	PC0400-BT	Bushing, Top	1
17	PC0400-BB	Bushing, Bottom	1
18	PCXXXX-HF	Hydraulic Fitting	2
19	PCXXXX-GZ	Grease Zerk	1
20	PCXXXX-NCV	Nitrogen Charging Valve	1
21	PC0400-AVF	Air Vent Fitting	1
22	PC0400-SK	Seal Kit	1



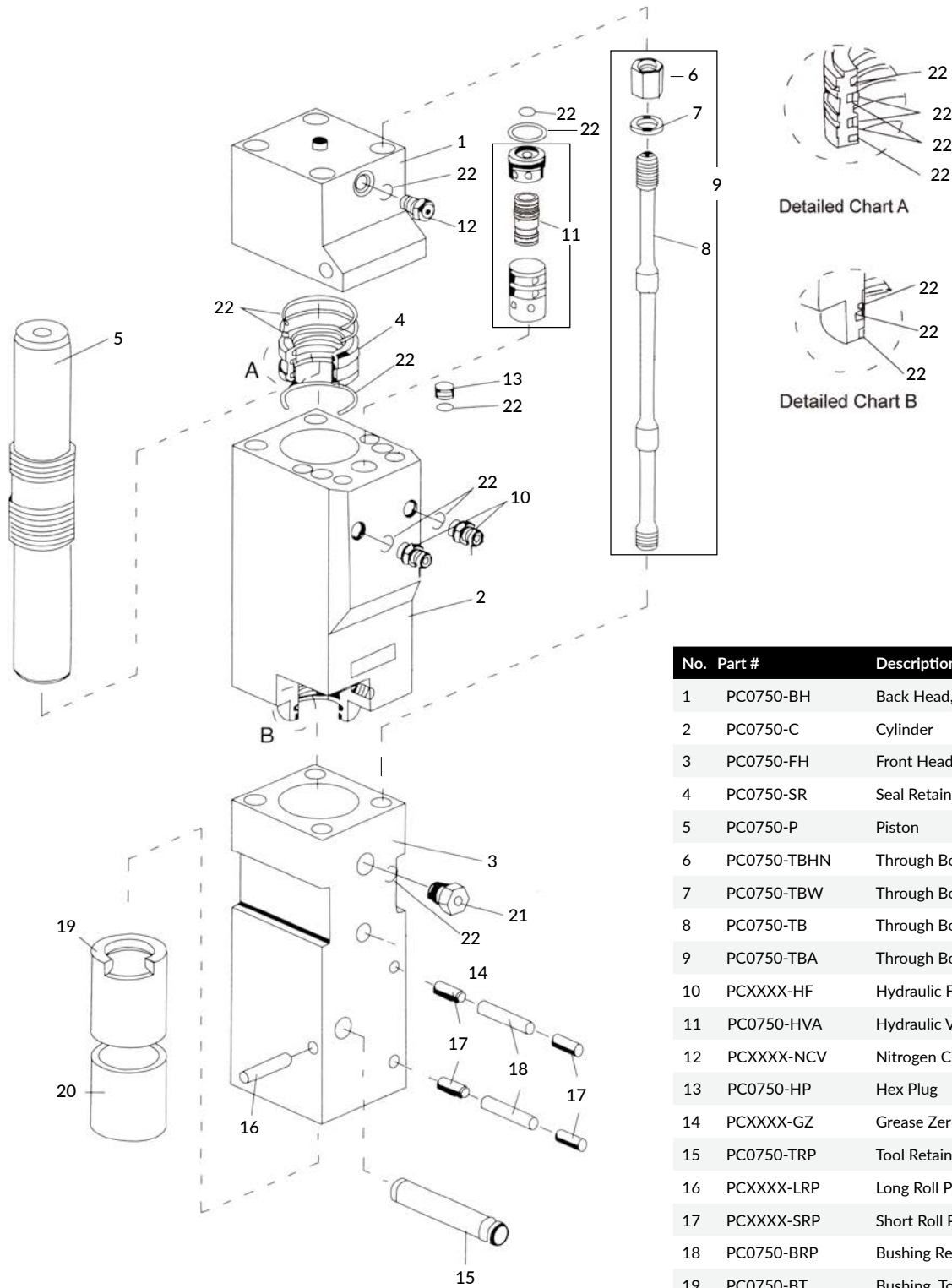
No.	Part #	Description	Qty
1	FSS-PC0400	Skid Steer Frame	1
2	PC0400-DPRP	Driver Plate, Rear Plate	1
3	PC0400-DPUB	Driver Plate, Upper Bracket	2
4	PC0400-DPLB	Driver Plate, Lower Bracket	2
5	PC0400-DPFP	Driver Plate, Front Plate	1
6	PC0400	Power Cell	1
7	PC0400-TSD	Standard Domed Tool	1
8	PCXXX-TRS	Rock Spike	1
9	MS90728-193	Hex Head Bolt, 3/4"-10, 3 1/2" Length, Grade 8	8
10	MS15795-822	Flat Washer, .82" ID, 1.48" OD	8
11	MS17830-12C	Locking Nut, 3/4"-10	8
12	PC0400-MH01	Bolt, M20-2.5x180mm, Grade 10.9, ISO 4017	4
13	PC0400-MH03	Lock Washer, M20-2.5, ISO 7090	4
14	PC0400-HK	Hose Kit (2 Hoses) With Elbows & Quick Couplers	1

# 750R

## Internal Parts



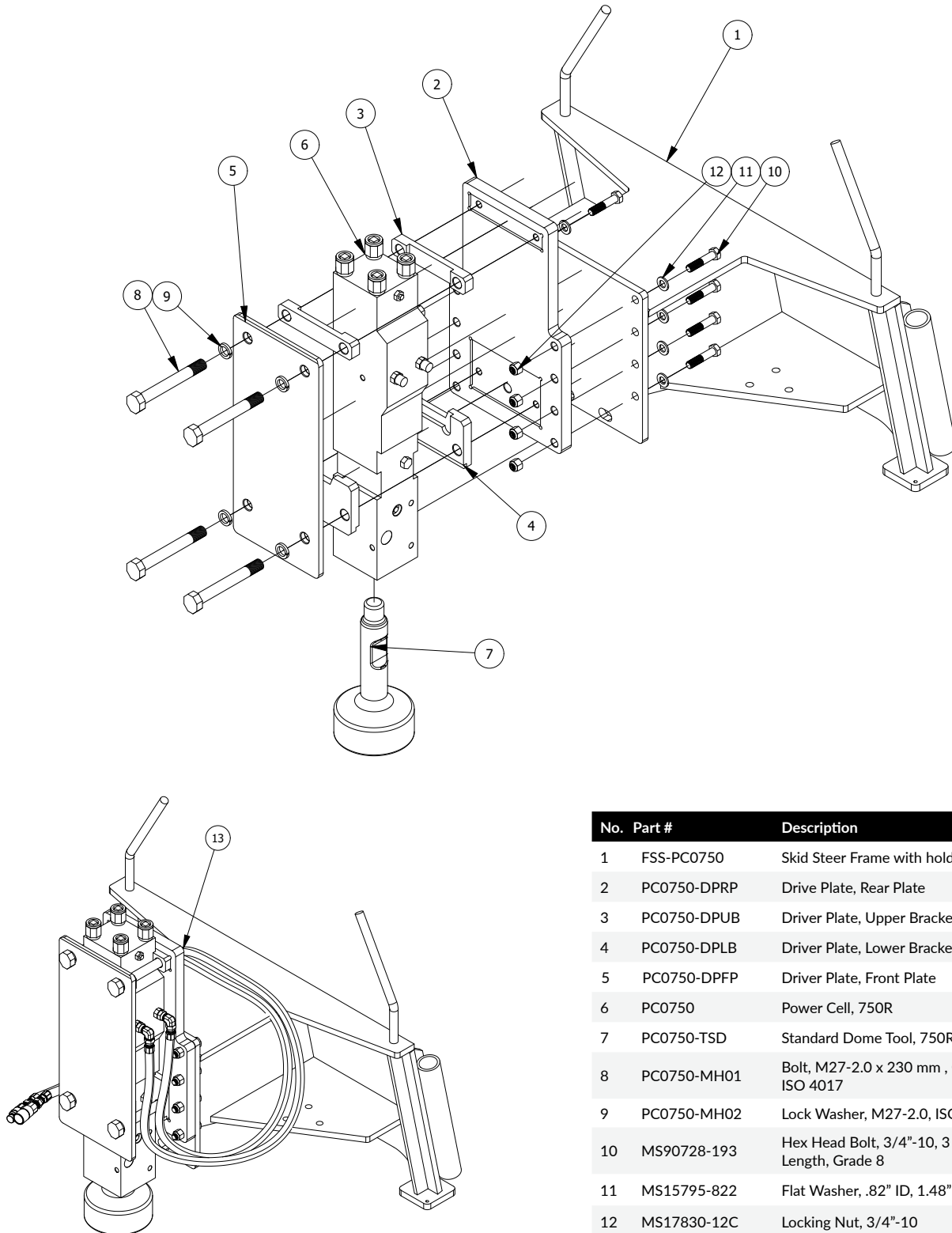
Diagram 7



No.	Part #	Description	Qty
1	PC0750-BH	Back Head, Nitrogen Cavity	1
2	PC0750-C	Cylinder	1
3	PC0750-FH	Front Head	1
4	PC0750-SR	Seal Retainer	1
5	PC0750-P	Piston	1
6	PC0750-TBHN	Through Bolt Hex Nut	4
7	PC0750-TBW	Through Bolt Washer	4
8	PC0750-TB	Through Bolt	4
9	PC0750-TBA	Through Bolt Assembly	4
10	PCXXXX-HF	Hydraulic Fitting	2
11	PC0750-HVA	Hydraulic Valve Assembly	1
12	PCXXXX-NCV	Nitrogen Charging Valve	1
13	PC0750-HP	Hex Plug	3
14	PCXXXX-GZ	Grease Zerk	1
15	PC0750-TRP	Tool Retaining Pin	1
16	PCXXXX-LRP	Long Roll Pin 4"	1
17	PCXXXX-SRP	Short Roll Pin 2"	4
18	PC0750-BRP	Bushing Retaining Pin	2
19	PC0750-BT	Bushing, Top	1
20	PC0750-BB	Bushing, Bottom	1
21	PC0750-AVF	Air Vent Fitting	1
22	PC0750-SK	Seal Kit	1



Diagram 8



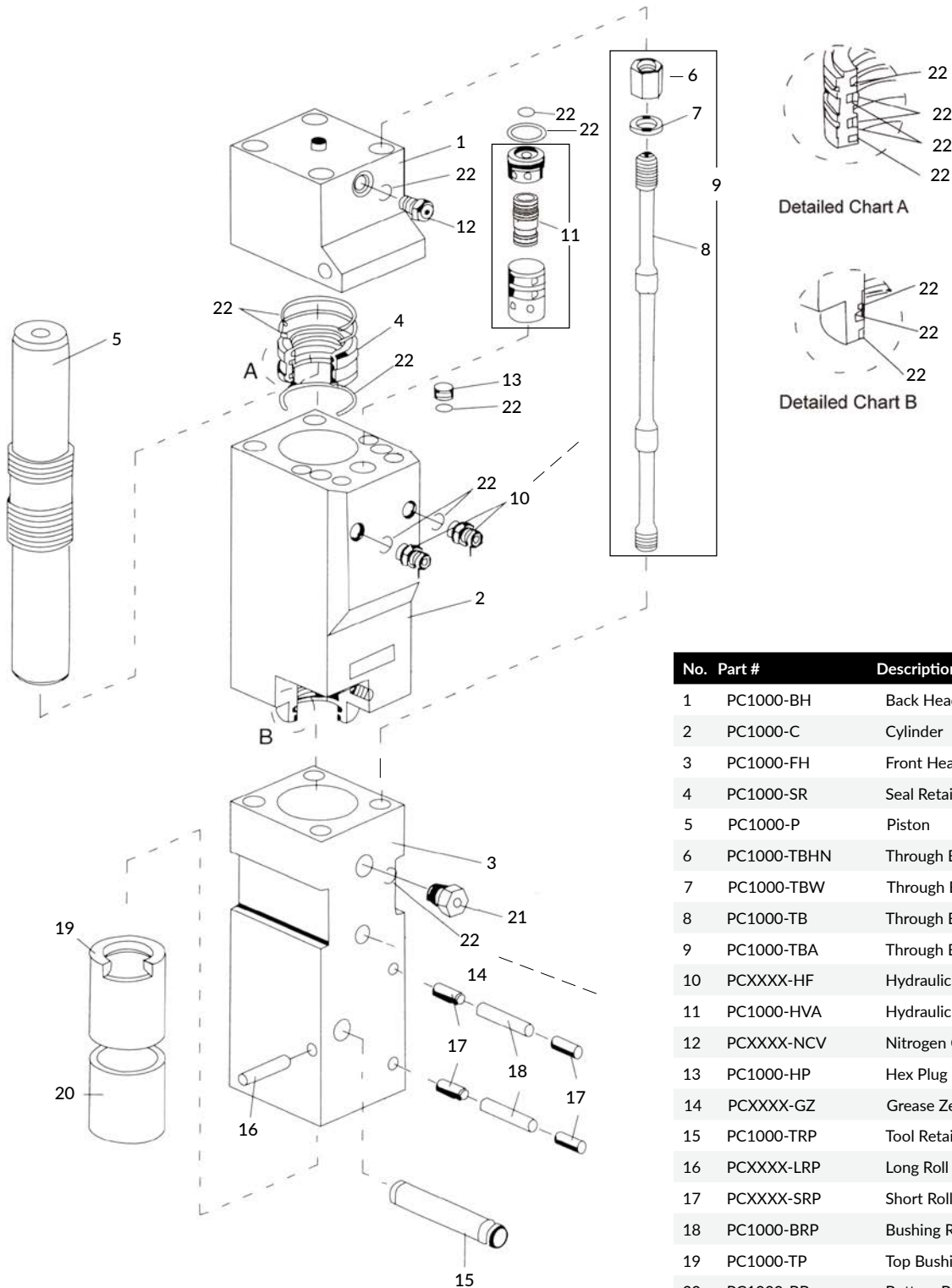
No.	Part #	Description	Qty
1	FSS-PC0750	Skid Steer Frame with holder, 750R	1
2	PC0750-DPRP	Drive Plate, Rear Plate	1
3	PC0750-DPUB	Driver Plate, Upper Bracket	2
4	PC0750-DPLB	Driver Plate, Lower Bracket	2
5	PC0750-DFPF	Driver Plate, Front Plate	1
6	PC0750	Power Cell, 750R	1
7	PC0750-TSD	Standard Dome Tool, 750R	1
8	PC0750-MH01	Bolt, M27-2.0 x 230 mm , Grade 10.9, ISO 4017	4
9	PC0750-MH02	Lock Washer, M27-2.0, ISO 7090	4
10	MS90728-193	Hex Head Bolt, 3/4"-10, 3 1/2" Length, Grade 8	8
11	MS15795-822	Flat Washer, .82" ID, 1.48" OD	8
12	MS17830-12C	Locking Nut, 3/4"-10	8
13	PC0750-HK	Hose Kit	1

# 1000E

## Internal Parts

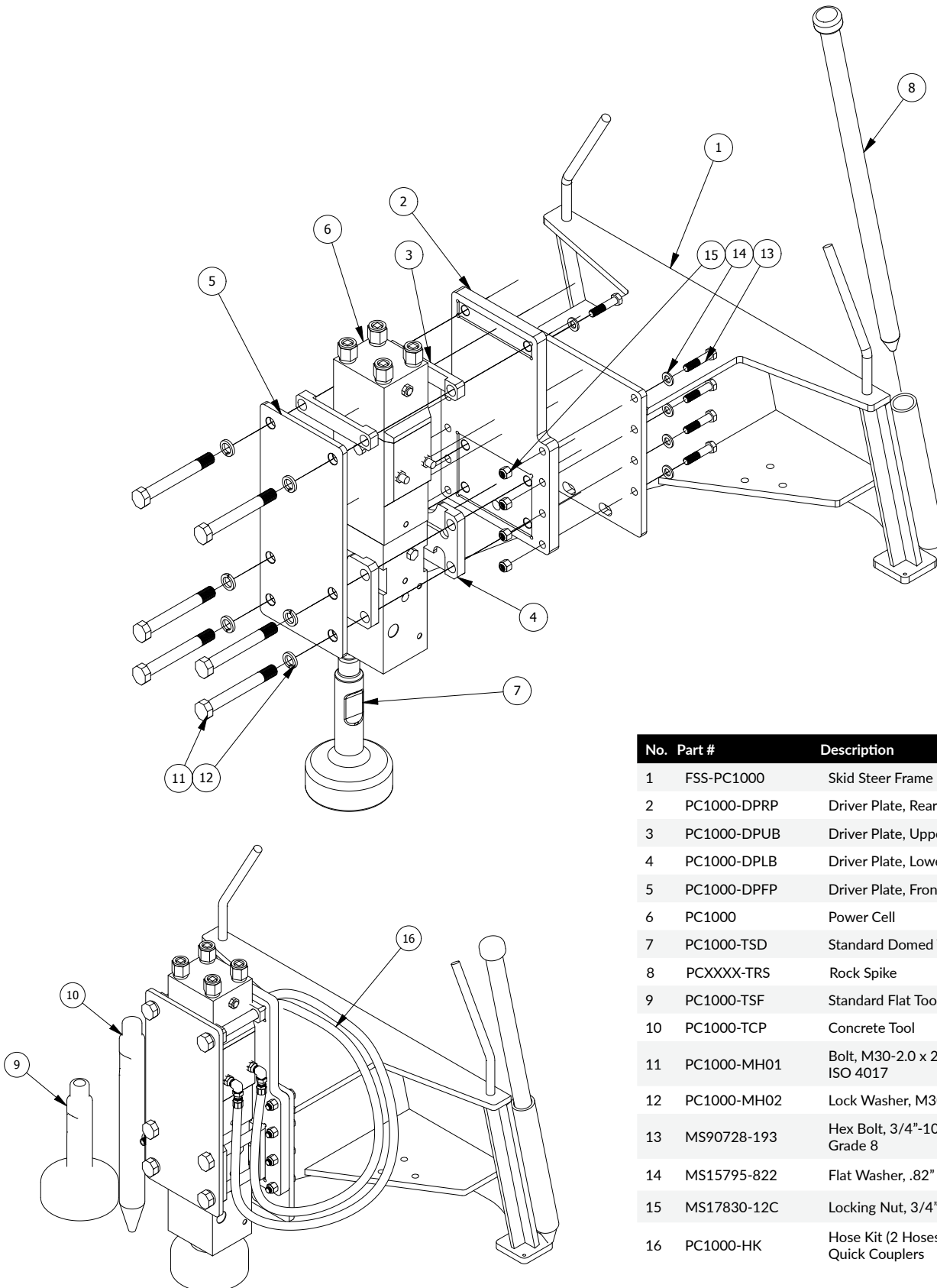


Diagram 9



No.	Part #	Description	Qty
1	PC1000-BH	Back Head, Nitrogen Cavity	1
2	PC1000-C	Cylinder	1
3	PC1000-FH	Front Head	1
4	PC1000-SR	Seal Retainer	1
5	PC1000-P	Piston	1
6	PC1000-TBHN	Through Bolt Hex Nut	4
7	PC1000-TBW	Through Bolt Washer	4
8	PC1000-TB	Through Bolt	4
9	PC1000-TBA	Through Bolt Assembly	4
10	PCXXXX-HF	Hydraulic Fitting	2
11	PC1000-HVA	Hydraulic Valve Assembly	1
12	PCXXXX-NCV	Nitrogen Charging Valve	1
13	PC1000-HP	Hex Plug	3
14	PCXXXX-GZ	Grease Zerk	1
15	PC1000-TRP	Tool Retaining Pin	1
16	PCXXXX-LRP	Long Roll Pin 4"	1
17	PCXXXX-SRP	Short Roll Pin 2"	4
18	PC1000-BRP	Bushing Retaining Pin	2
19	PC1000-TP	Top Bushing	1
20	PC1000-BB	Bottom Bushing	1
21	PC1000-AVF	Air Vent Fitting	1
22	PC1000-SK	Seal Kit	1

Diagram 10



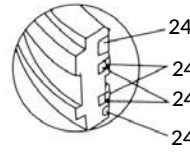
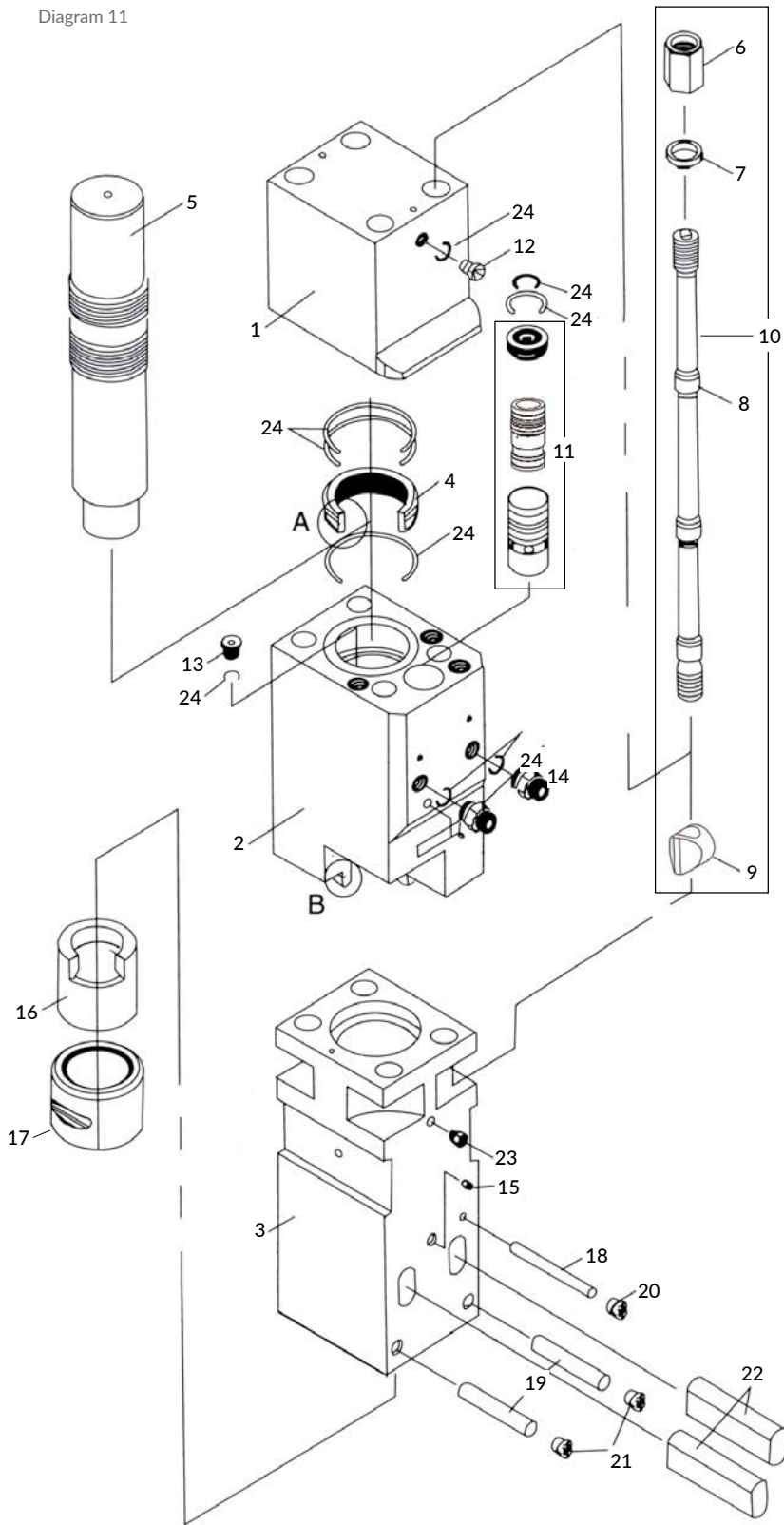
No.	Part #	Description	Qty
1	FSS-PC1000	Skid Steer Frame	1
2	PC1000-DPRP	Driver Plate, Rear Plate	1
3	PC1000-DPUB	Driver Plate, Upper Bracket	2
4	PC1000-DPLB	Driver Plate, Lower Bracket	2
5	PC1000-DPFP	Driver Plate, Front Plate	1
6	PC1000	Power Cell	1
7	PC1000-TSD	Standard Domed Tool	1
8	PCXXX-TRS	Rock Spike	1
9	PC1000-TSF	Standard Flat Tool	1
10	PC1000-TCP	Concrete Tool	1
11	PC1000-MH01	Bolt, M30-2.0 x 250mm, Grade 10.9, ISO 4017	6
12	PC1000-MH02	Lock Washer, M30-2.0, ISO 7090	6
13	MS90728-193	Hex Bolt, 3/4"-10, 3 1/2" Length, Grade 8	8
14	MS15795-822	Flat Washer, .82" ID, 1.48" OD	8
15	MS17830-12C	Locking Nut, 3/4"-10	8
16	PC1000-HK	Hose Kit (2 Hoses) With Elbows & Quick Couplers	1

# 1500E

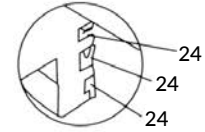
## Internal Parts



Diagram 11



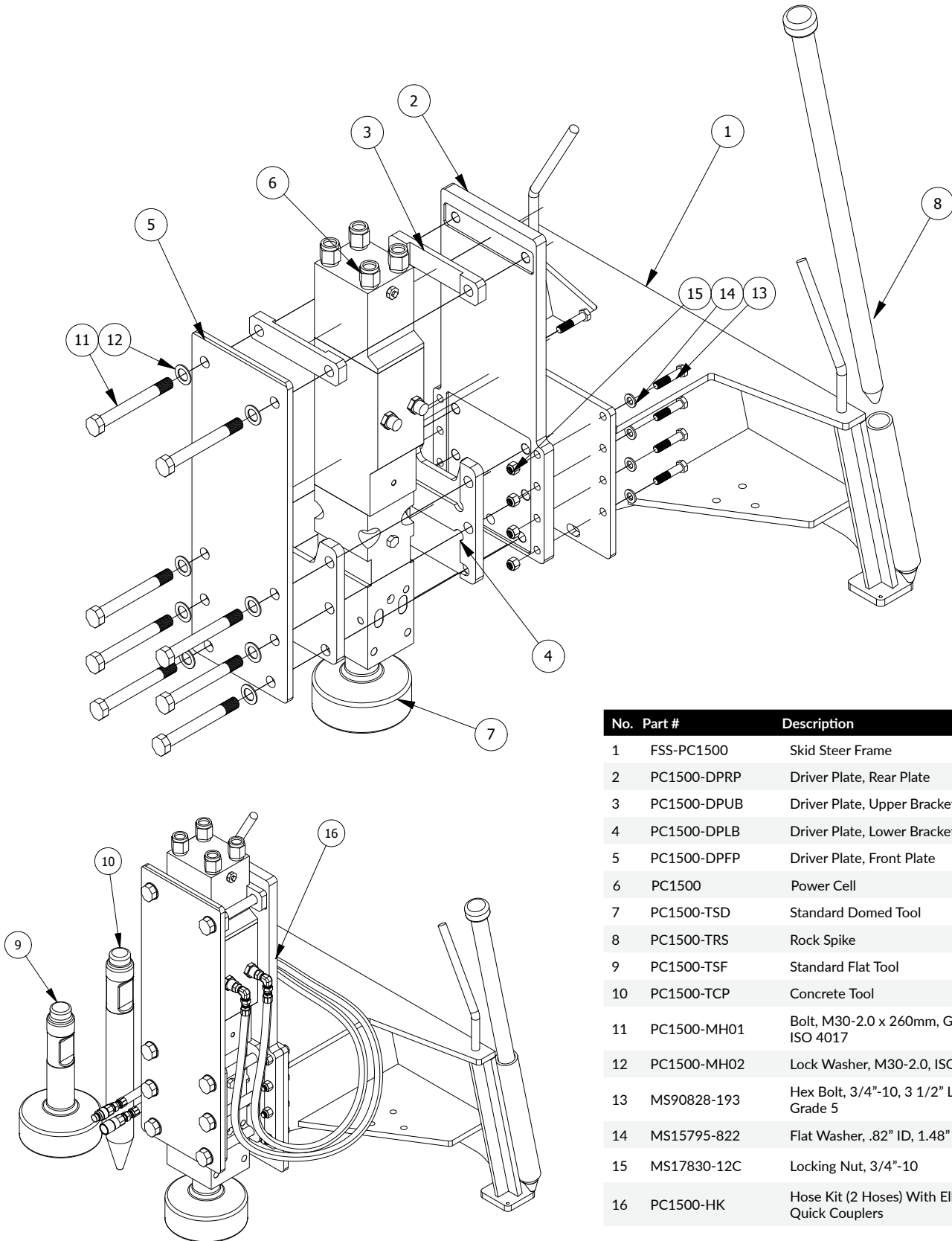
Detailed Chart A



Detailed Chart B

No.	Part #	Description	Qty
1	PC1500-BH	Back Head, Nitrogen Cavity	1
2	PC1500-C	Cylinder	1
3	PC1500-FH	Front Head	3
4	PC1500-SR	Seal Retainer	1
5	PC1500-P	Piston	1
6	PC1500-TBN	Through Bolt Nut	4
7	PC1500-TBW	Through Bolt Washer	4
8	PC1500-TB	Through Bolt	4
9	PC1500-TBRN	Through Bolt Round Nut	4
10	PC1500-TBA	Through Bolt Assembly (#6,7,8,9)	4
11	PC1500-HVA	Hydraulic Valve Assembly	1
12	PCXXXX-NCV	Nitrogen Charging Valve	1
13	PC1500-HP	Hex Plug	3
14	PC1500-HF	Hydraulic Fitting	2
15	PCXXXX-GZ	Grease Zerk	1
16	PC1500-BT	Bushing, Top	1
17	PC1500-BB	Bushing, Bottom	1
18	PC1500-TBP	Top Bushing Pin	1
19	PC1500-BBP	Bottom Bushing Pin	2
20	PC1500-THP	Top Hex Plug	1
21	PC1500-BHP	Bottom Hex Plug	2
22	PC1500-TRP	Tool Retaining Pin	2
23	PC1500-AVF	Air Vent Fitting	1
24	PC1500-SK	Seal Kit	1

Diagram 12



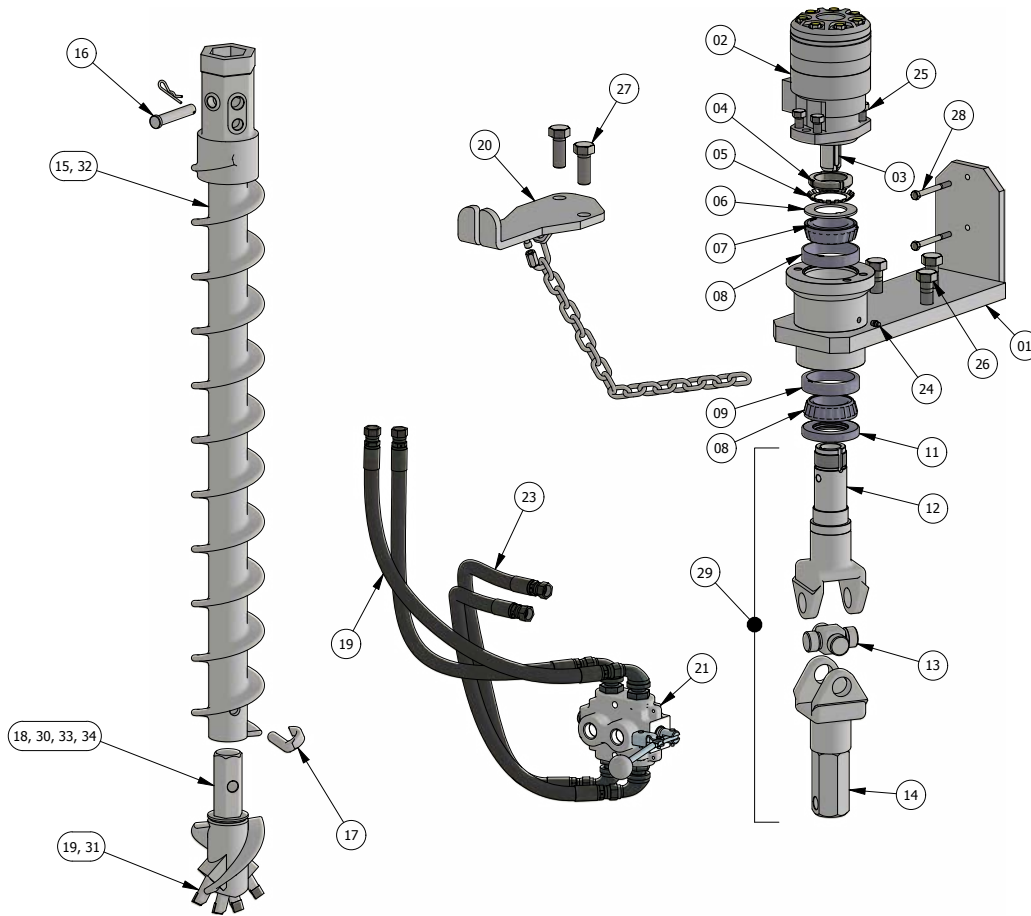
No.	Part #	Description	Qty
1	FSS-PC1500	Skid Steer Frame	1
2	PC1500-DPRP	Driver Plate, Rear Plate	1
3	PC1500-DPUB	Driver Plate, Upper Bracket	2
4	PC1500-DPLB	Driver Plate, Lower Bracket	2
5	PC1500-DPPF	Driver Plate, Front Plate	1
6	PC1500	Power Cell	1
7	PC1500-TSD	Standard Domed Tool	1
8	PC1500-TRS	Rock Spike	1
9	PC1500-TSF	Standard Flat Tool	1
10	PC1500-TCP	Concrete Tool	1
11	PC1500-MH01	Bolt, M30-2.0 x 260mm, Grade 10.9, ISO 4017	8
12	PC1500-MH02	Lock Washer, M30-2.0, ISO 7090	8
13	MS90828-193	Hex Bolt, 3/4"-10, 3 1/2" Length, Grade 5	8
14	MS15795-822	Flat Washer, .82" ID, 1.48" OD	8
15	MS17830-12C	Locking Nut, 3/4"-10	8
16	PC1500-HK	Hose Kit (2 Hoses) With Elbows & Quick Couplers	1

# Auger Attachment



## Parts

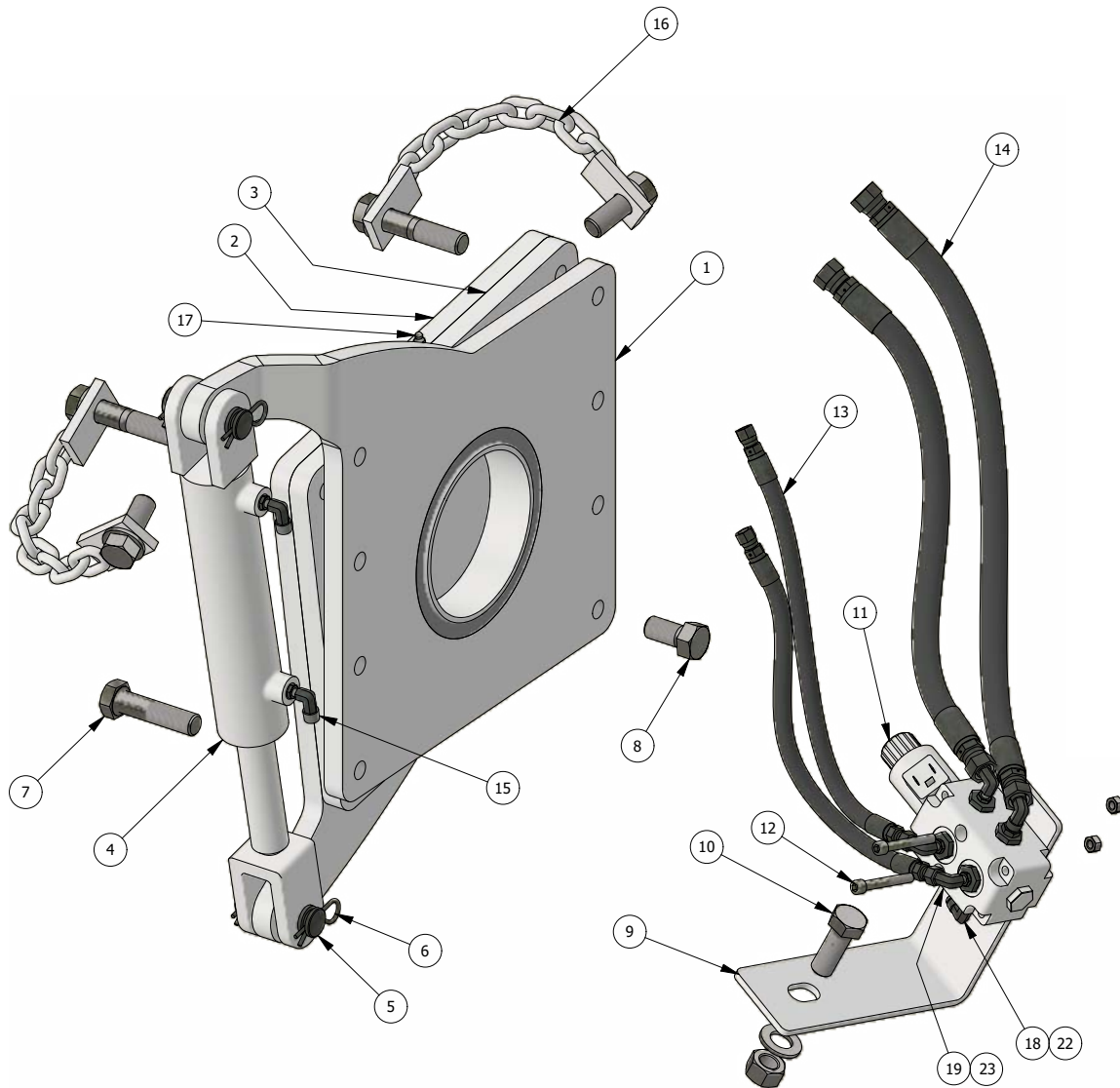
Diagram 13



No.	Part #	Description	Qty
1	AUG-AMB	Auger Mounting Bracket	1
2	AUG-HM	Hydraulic Motor TGO140EV080AAAA	1
3	AUG-PK	Parrallel Key ANSI B17.1 - 0.3125x0.3125x1.75	1
4	AUG-BRN	Bearing Round Nut ANSI/AFBMA std.8.2 - W-10	1
5	AUG-BLW	Bearing Lock Washer ANSI/AFBMA std.8.2 - W-10	1
6	AUG-LCW	Laser Cut Washer	1
7	AUG-BU	Upper Bearing, Small (LM104949)	1
8	AUG-BRU	Bearing, Race, Upper, Small (JLM104911)	1
9	AUG-BRB	Bearing Race, Bottom, Large (JLM506810)	1
10	AUG-BB	Bottom Bearing, Large (JLM506849)	1
11	AUG-GS	Grease Seal (253544TC-BX)	1
12	AUG-BSY	2" Top Bearing Shaft & Yoke (26-F)	1
13	AUG-UJC	2" U-Joint Cross (200-3500)	1
14	AUG-HSY	2" Bottom Hex Shaft & Yoke (26-F)	1
15	AUG-4-AF	4" Auger Flight	1
16	AUG-ACP	Auger Clevis Pin & Clip	1

17	AUG-ARP	Auger Retaining Pin	1
18	AUG-4-CTH	4" Carbide 4/Tooth Auger Head	1
19	AUG-CT	Square Carbide Replacement Tooth	4
20	AUG-SBC	Auger Stow Bracket with Chain	1
21	AUG-DSV	Double Selector Valve (Prince DS-5A4E)	1
22	AUG-DHS	Driver Hose Set (2 hoses) with Elbows and Fittings	1
23	AUG-MHS	Motor Hose Set (2 hoses) with Elbows and Fittings	1
24	AUG-GZ	Grease Zerk	1
25	AUG-DMB	Drive Motor Bolts (1/2"-20 x 1.25" Grd-8, w/Lock Washer)	4
26	AUG-MB	Mounting Bolts	3
27	AUG-SBB	Stow Bracket Bolts	2
28	AUG-VMB	Valve Mounting Bolts	2
29	AUG-YAC	2" Yoke Assembly Complete	1
30	AUG-4-BTH	4" Bullet 4/Tooth Head	1
31	AUG-BT	Bullet Replacement Tooth	4
32	AUG-6-AF	6" Auger Flight	1
33	AUG-6-CTH	6" Carbide 6/Tooth Auger Head	1
34	AUG-6-BTH	6" Bullet 6/Tooth Head	1

Diagram 14



No.	Part #	Description	Qty
1	TILT-LAP	Long Arm Plate with Center Disc	1
2	TILT-SAP	Short Arm Plate	1
3	TILT-CSP	Center Spacer Plate	1
4	TILT-HC	Hydraulic Cylinder 2x6	1
5	TILT-CP	Clevis Pin (1" DIA x 3")	2
6	TILT-HPC	Hairpin Clip (1/8" DIA x 2.5")	4
7	TILT-DB	Driver Bolts (3/4-NC x 3")	6
8	TILT-FB	Frame Bolts (3/4-NC x 1.5")	8
9	TILT-VMB	Valve Mounting Bracket	1
10	TILT-BMB	Bracket Mounting Bolt (3/4-NC x 2") W/Lock Nut & Washer	1
11	TILT-SV	Solenoid Valve	1
12	TILT-VMB	Valve Mounting Bolt (5/16-NC x 2.25"SHCS) W/Lock Nut	2

13	TILT-CHS	Cylinder Hose Set (2 Hoses) W/ Elbows & Fittings	1
14	TILT-DHS	Driver Hose Set (2 hoses) with Elbows and Fittings	1
15	TILT-CHE	Cylinder Hydraulic Elbows	2
16	TILT-SCB	Safety Chain with Bolts (3/4-NCx2" & 3/4-NCx3.5" Grade 5)	2
17	TILT-GZ	Grease Zerk	2
18	TILT-LE	Long Elbow	1
19	TILT-SE	Short Elbow	1
20	10MON2010	Wiring Harness (Cigarette Single Switch Magnetic)	1
21	TILT-DHS-1500	1500E Driver Hose Set (2 hoses) with Elbows and Fittings	1
22	TILT-LE-1500	1500E Long Elbow	1
23	TILT-SE-1500	1500E Short Elbow	1

# Tooling

For Skidsteer & Excavator



Part #	Description	Model	Price	Sketch	Weight	Shipping Size (in.)	Shaft Dia.	Inner Dia.
1	PC0400-TSF	400E	\$450		43 lb.	7x7x17	2.12"	6"
2	PC0750-TSF	750R	\$550		60 lb.	8x8x17	2.7"	7"
3	PC1000-TSF	1000E	\$600		69 lb.	9x9x17	3"	8"
4	PC1500-TSF	1500E	\$650		100 lb.	10x10x19	3.35"	9"
5	PC0350-TSD	350E	\$89		8 lb.	5x5x5	1.95	4 3/8"
6	PC0400-TSD	400E	\$550		51 lb.	7x7x17	2.12"	6"
7	PC0750-TSD	750R	\$550		53 lb.	8x8x17	2.7"	7"
8	PC1000-TSD	1000E	\$600		69 lb.	9x9x17	3"	8"
9	PC1500-TSD	1500E	\$650		85 lb.	10x10x19	3.35"	9"
10	PC0750-TOF	750R	\$650		69 lb.	9x9x17	2.7"	8"
11	PC1000-TOF	1000E	\$750		84 lb.	10x10x17	3"	9.5"
12	PC0750-TOD	750R	\$650		75 lb.	9x9x17	2.7"	8"
13	PC1000-TOD	1000E	\$750		88 lb.	10x10x17	3"	9.5"
14	PC0750-TUF	750R	\$450		40 lb.	6x6x17	2.7"	5"
15	PC1000-TUF	1000E	\$450		45 lb.	6x6x17	3"	5"
16	PC0750-TUD	750R	\$450		40 lb.	6x6x17	2.7"	5"
17	PC1000-TUD	1000E	\$450		44 lb.	6x6x17	3"	5"
18	PC1000-TRR	1000E	\$850		84 lb.	12x12x17	3"	11"
19	PC1500-TRR	1500E	\$850		96 lb.	12x12x19	3.35"	11"
20	PC0750-TWS	750R	\$450		42 lb.	5x5x20	2.7"	
21	PC1000-TWS	1000E	\$450		56 lb.	5x5x20	3"	



## Rock Spike

Tool #	Model	Price	Sketch	Weight	Length	Shaft Dia.
22	PCXXXX-TRS	400E		42 lb.	48"	2"
23	PCXXXX-TRS	750R		42 lb.	48"	2"
24	PCXXXX-TRS	1000E		42 lb.	48"	2"
25	PCXXXX-TRS	1500E		42 lb.	48"	2"

## Breaker Point Types



## Concrete Tool: #3 Conical Point

Part #	Model	Price	Sketch	Weight	Length	Shaft Dia.
26	PC0400-TCP	400E		30 lb.	23.5"	2.12"
27	PC0750-TCP	750R		38 lb.	28"	2.7"
28	PC1000-TCP	1000E		50 lb.	30"	3.0"
29	PC1500-TCP	1500E		67 lb.	33.5"	3.35"

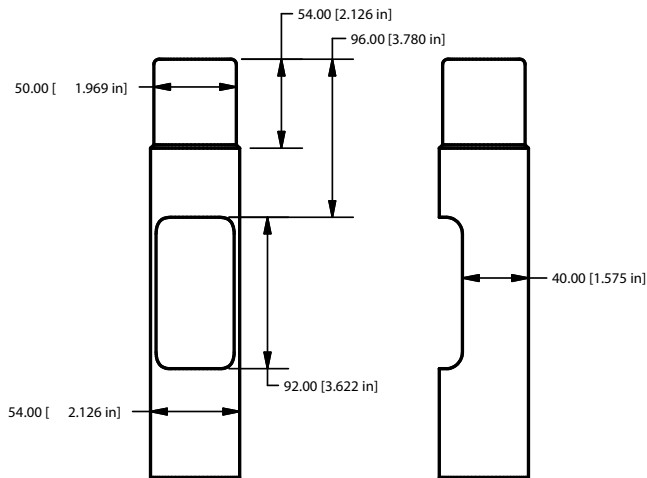
## Concrete Point: #4 V-Wedge

Part #	Model	Price	Sketch	Weight	Length	Shaft Dia.
30	PC0400-TVW	400E		30 lb.	28"	2.7"
31	PC0750-TVW	750R		38 lb.	28"	2.7"
32	PC1000-TVW	1000E		50 lb.	30"	3.0"
33	PC1500-TVW	1500E		67 lb.	33.5"	3.35"

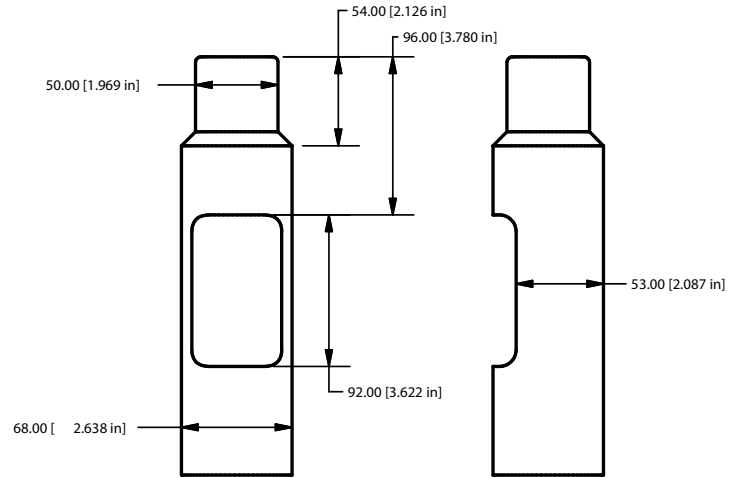
## Concrete Point: #5 H-Wedge

Part #	Model	Price	Sketch	Weight	Length	Shaft Dia.
34	PC0400-THW	400E		30 lb.	28"	2.7"
35	PC0750-THW	750R		38 lb.	28"	2.7"
36	PC1000-THW	1000E		50 lb.	30"	3.0"
37	PC1500-THW	1500E		67 lb.	33.5"	3.35"

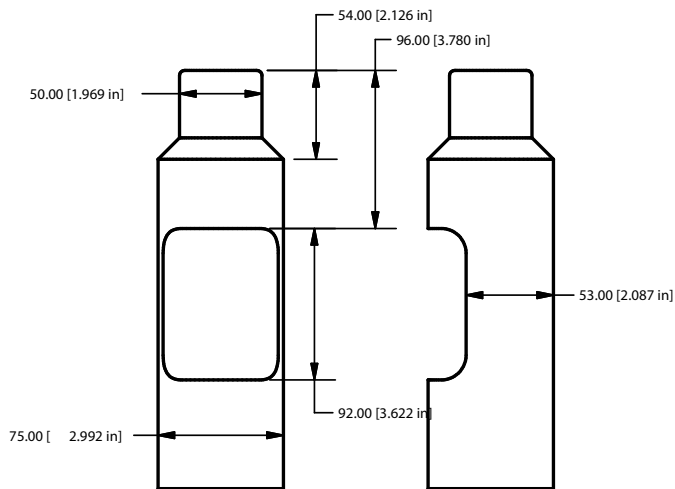




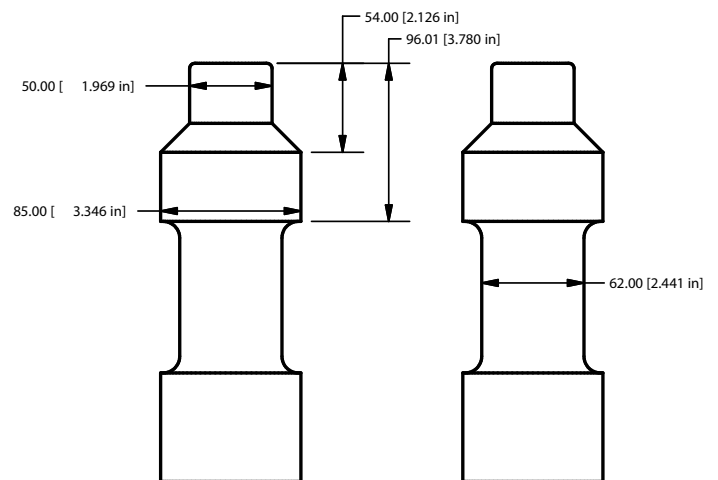
**Tool Shank Dimensions 400E**



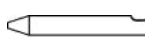
**Tool Shank Dimensions 750R**



**Tool Shank Dimensions 1000E**



**Tool Shank Dimensions 1500E**



Symptom	Cause	Solution
<b>Does not Fire</b>	<ol style="list-style-type: none"> <li>1. Not enough down pressure being applied.</li> <li>2. Insufficient hydraulic oil flow/pressure from machine.</li> <li>3. Overcharged with nitrogen</li> <li>4. Broken tool shaft. (A broken tool shaft can wedge itself, preventing post driver from firing.)</li> </ol>	<ol style="list-style-type: none"> <li>1. Apply sufficient down pressure. (See page 5.)</li> <li>2. Diagnose why your machine does not have sufficient oil flow/pressure and make necessary corrections.</li> <li>3. Check nitrogen pressure. If over 230 PSI, then release pressure to 230 PSI. (See page 8.)</li> <li>4. Replace broken tool. Check bushings for cracks and replace if cracked. (See page 7.)</li> </ol>
<b>Low Impact</b>	<ol style="list-style-type: none"> <li>1. Insufficient nitrogen pressure.</li> <li>2. Insufficient hydraulic oil flow/pressure from machine.</li> </ol>	<ol style="list-style-type: none"> <li>1. Add nitrogen to 230 PSI. (See page 8.)</li> <li>2. Diagnose why your machine does not have sufficient oil flow/pressure and make necessary corrections.</li> </ol>
<b>Oil Leakage Between Front Head and Tool</b>	<ol style="list-style-type: none"> <li>1. Worn seals.</li> <li>2. Conventional grease instead of chisel/hammer paste. Conventional grease liquefies faster and can be mistaken for oil.</li> </ol>	<ol style="list-style-type: none"> <li>1. Change seals.</li> <li>2. Use chisel/hammer paste.</li> </ol>
<b>Nitrogen Leakage</b>	<ol style="list-style-type: none"> <li>1. Damaged O-ring on nitrogen charge valve.</li> <li>2. Damaged nitrogen charge valve.</li> <li>3. Worn Seals. (Worn seals can allow nitrogen to leak out of nitrogen chamber.)</li> </ol>	<ol style="list-style-type: none"> <li>1. Replace O-ring.</li> <li>2. Replace nitrogen charge valve.</li> <li>3. Change seals.</li> </ol>



# Technical Info

Technical Information						
Post Driver Model		350E	400E	750R	1000E	1500E
Working Weight (Skidsteer Post Driver)	lbs.	320	780	1,380	2,000	2,350
Hydraulic Oil Flow (recommended)	gpm	5-10	7-13	11-18	13-24	16-27
Minimum Hydraulic Oil Pressure	psi	1,300	1,300	2,000	2,200	2,300
Blow Rate	bpm	700-1,200	600-1,100	500-900	400-800	400-800
Impact Force	ft-lbs	-	-	-	-	-
Nitrogen Pressure (recommended)	psi	200	230	230	230	230
Tool Shaft Diameter	in.	1.95	2.12	2.7	3	3.35
Standard Tool ID	in.	4 <sup>3</sup> / <sub>8</sub>	6	7	8	9
Hydraulic Hose Dimensions	in.	½ × 73	½ × 93	½ × 93	½ × 93	¾ × 102
Working Weight (Excavator Post Driver)	lbs.	310	650	800	850	1,310
Excavator Weight (recommended)	lbs.	2,000-10,000	5,500-10,000	8,000-14,000	12,000-18,000	14,000-28,000

Torque Specifications			
	Plate Bolts	Through Bolts (Tie Rod)	Mounting Bolts (¾ × 3 ½")
350E	350 ft/lb	325 ft/lb	200 ft/lb
400E	350 ft/lb	325 ft/lb	200 ft/lb
750R	900 ft/lb	885 ft/lb	200 ft/lb
1000E	1200 ft/lb	959 ft/lb	200 ft/lb
1500E	1200 ft/lb	1,107 ft/lb	200 ft/lb

## Short Term Storage

1. Apply 5 pumps of grease into tool grease zerk.
2. Place on wood blocks or skid.
3. Cover with waterproof tarp (not pictured).



## Long Term Storage

1. Apply 5 pumps of grease into tool grease zerk.
2. Release nitrogen pressure.
3. Place on wood blocks or skid.
4. Cover with waterproof tarp (not pictured).



# Warranty

For All Products

All Montana Products are warranted cover-to-cover for 1 year from the date when the customer purchased the product. To file a claim follow the instructions below.

## 1. Collect the information for the product you are placing a claim for.

### Tooling

1. Picture of both broken pieces.
2. Picture of the serial number on the tool shaft.
3. Date Purchased  
(You can discard the broken tool after you receive a replacement.)

### Post Driver / Jack Hammer

1. Picture of the problem such as damaged shaft or oil leak.
2. Picture of the serial number on the driver
3. Date Purchased  
(You can discard damaged parts after you receive a replacement.)

### Other

1. Picture of the damage.
2. Date Purchased  
(You can discard damaged parts after you receive a replacement.)

2. Please submit pictures and date purchased to the dealer who sold you the product, or email [montanapostdriver@gmail.com](mailto:montanapostdriver@gmail.com) with the information.

We cover 2 hours labor x \$100.00 to rebuild one of our drivers.

We do not cover labor to change out a tool.



**MONTANA**  
**POST DRIVER**

*An innovative post driver  
that's faster, more reliable  
and safer.*

Learn more:  
[montanapostdriver.com](http://montanapostdriver.com)  
Gold Creek, Montana